

# TRACEMASTER TX5 TRANSMITTER DISPLAY FUNCTIONS AND SELECTIONS QUICK GUIDE

## BATTERY CHARGING MODE

Note: Transmitter does not need to be ON while charging, but no display indicators will be shown if it is OFF.



Display shown if power supply is plugged into Transmitter and into an AC source.

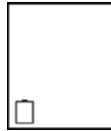


Display shown when battery is fully charged.

Battery symbol will continue to cycle through bars after charge is completed until removed from AC source.

## START-UP SEQUENCE

Note: Display will be backlit if ambient light is too low



Display appearance when Transmitter is OFF.



**Turning Transmitter ON**  
Depress button for 1 second.

**Turning Transmitter OFF**  
Depress button for 1 second.



All display segments are momentarily lit.



Transmitter software version is displayed momentarily.



The Transmitter defaults to PASSIVE mode (50 or 60 Hz locating).

## MEASUREMENT MODE

Available only in Conductive Mode



Upon initial connection to the utility and ground, a series of measurements are made to alert the operator of any LIVE voltage and utility resistance value.

Measurements will continue to cycle until an active frequency is selected.



Checking for AC voltage  
Example: 95 VAC on conductor.



Checking for DC voltage  
Example: 12 VDC on conductor.



Checking resistance  
Example: ~100 k Ohm (average cable resistance that is properly grounded at far end).



Example of a high resistance:  
4.7 M Ohm, possible fault in cable.



Example of a very high resistance:  
(OL = Over Limit of 5 M Ohms)  
Fault in cable, open ended cable or bad connection.

**Support: 888-32-TRACE**

(888) 328-7223

**SCHONSTEDT**   
INSTRUMENT COMPANY

*Making Locating Easier Since 1953*

100 Edmond Road • Kearneysville, WV 25430  
Phone: 304-725-1050 • Fax: 304-725-1095  
info@schonstedt.com • www.schonstedt.com

## MORE INFORMATION

More helpful information can be located on our website at [www.schonstedt.com](http://www.schonstedt.com) such as: Instruction Manual, How to Locate Manual and How to Locate Videos.



# TRACEMASTER TX5 TRANSMITTER DISPLAY FUNCTIONS AND SELECTIONS QUICK GUIDE

## OUTPUT POWER ADJUSTMENT

Available only in Conductive Mode



**OUTPUT POWER**

Depress button to select output power



Example:  
5 Watts  
(at 575 Hz, 1, 2 or 5 Watts are available)



Example:  
2 Watts  
(at 8.0 k Hz, 1, 2 or 5 Watts are available)



Example:  
1 Watt  
(at 82.7 kHz)

## CONTINUITY MEASUREMENT

Available only in Conductive Mode



The display will alternate between frequency selected and current in milliamps (mA) indicating the quality of the circuit (earth - ground stake - utility).



Example:  
A reading above 20 mA indicates a good connection and a good conductor.



Example:  
A reading below 5 mA indicates a poor connection or conductor.



Example:  
A very poor reading. Troubleshoot all circuit connections. Locating will likely not be possible.

## INDUCTIVE MODE

Inductive Signal Clamp and Inductive (a.k.a. "Drop the Box") Modes

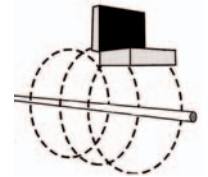


**Inductive Signal Clamp Mode** is only available at 8.0 kHz and 82.7 kHz.



Transmitter will recognize the Inductive Signal Clamp (ISC) is inserted into the jack and will display CLA (Clamp).

**Inductive Mode (a.k.a. "Drop the Box")** is only available at 82.7 kHz.



Transmitter will recognize that nothing is plugged into the jack and will default to Inductive Mode using the built-in antenna. Display will show Ind (Inductive).

## TRANSMITTER MANUAL FREQUENCY

**FREQ**

Transmitter's FREQ button is for back-up in case the Radio Link has been disabled or failed. Depress to cycle through available frequencies. Must match frequency selection on receiver. Transmitter will only cycle through valid frequencies as determined by the operating mode.